



## MechScan

White light 3D macro scanner, ideal for capturing small parts such as:

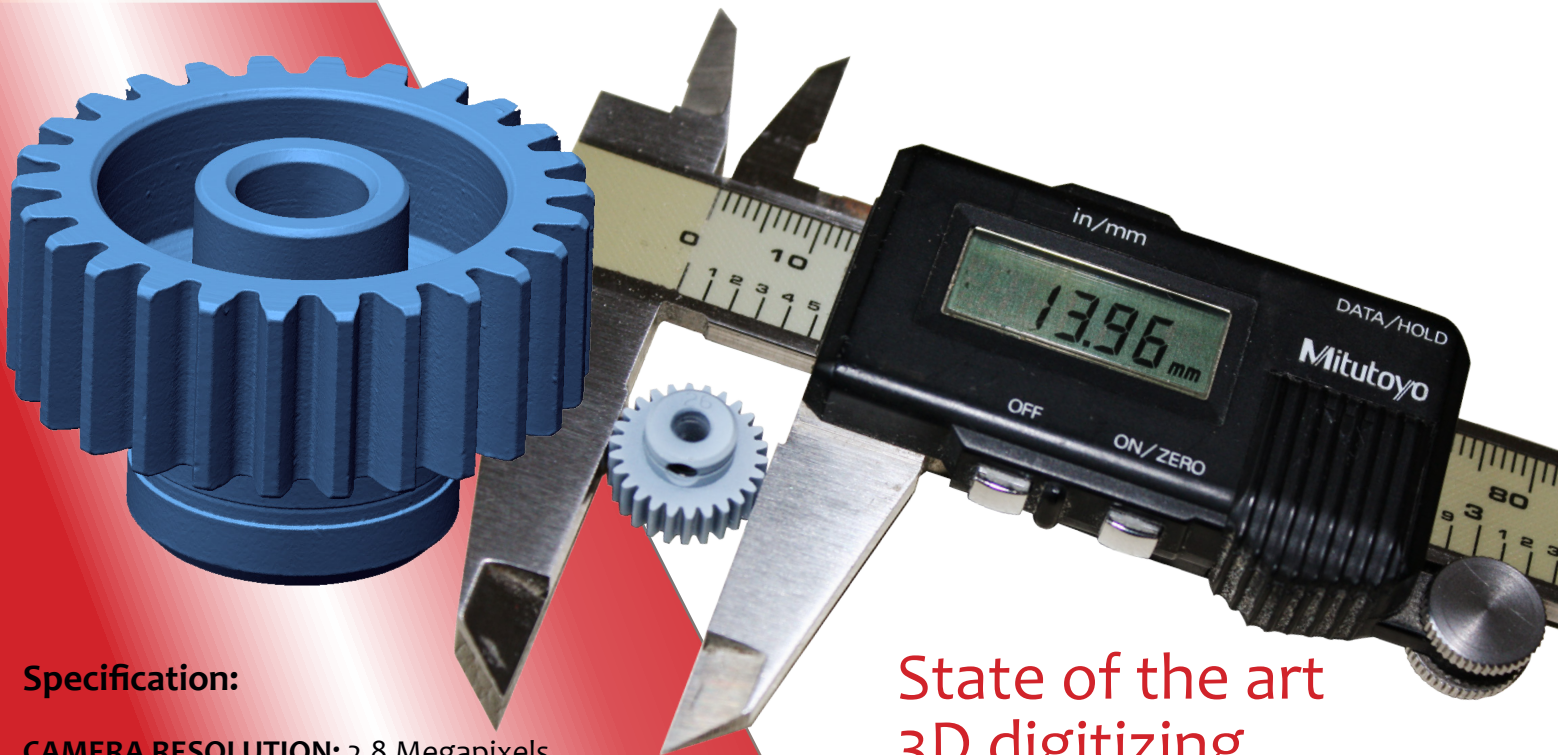
- Precision-machined parts
- Mouldings
- Archaeological artefacts
- Jewellery/Coins

For further information  
visit our website:

[www.mechscan.co.uk](http://www.mechscan.co.uk)







## Specification:

**CAMERA RESOLUTION:** 2.8 Megapixels

**SCANNING SOFTWARE:** FlexScan3D

**ACQUISITION SPEED:** 1-4 seconds

**FIELD OF VIEW (Diagonal):** 30-110 mm

**FIELD OF VIEW (X-Y):** 24 x 18 mm To 90 x 65 mm

**DEPTH OF FIELD:** Min. 1/2 horizontal FOV

**RESOLUTION:**

*Average points:* 2.6 million

*Average polygons:* 1.3 million

*Point to point distance:* 0.01 mm to 0.045 mm

**ACCURACY:** 0.001 mm To 0.01 mm

**CALIBRATION:** User calibrated

**GEOMETRY FORMATS:** PLY, STL, OBJ, ASC, FBX, 3D3

**SENSOR INTERFACE:** USB 3 or FireWire 800

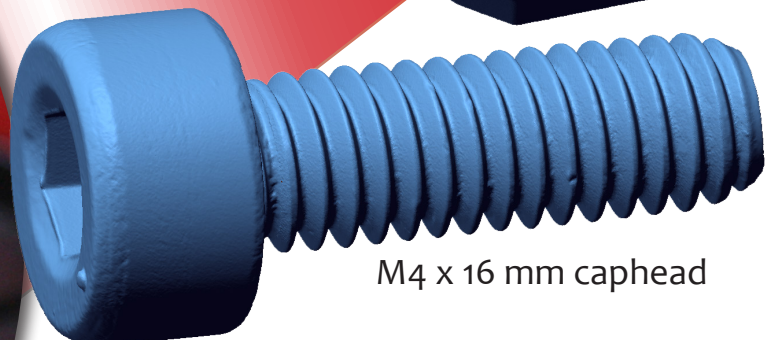
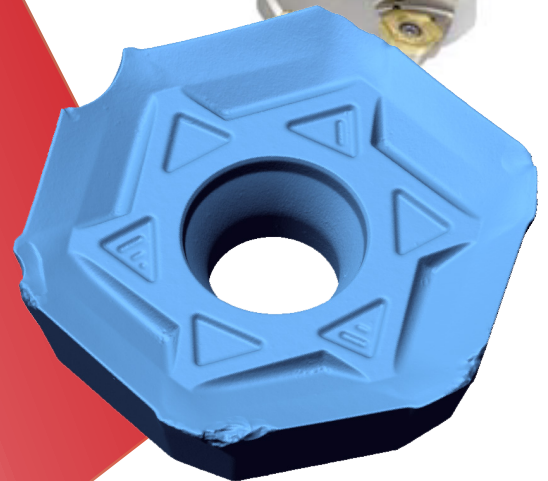
**COMPUTER REQUIREMENTS:** Windows 7/8 64 bit, Quad-core

Intel 2 GHz or better, 1x PCI Express or 2x USB plugs, 4 GB

memory or greater, 512 MB video card, 500 GB free disk space or more.

## State of the art 3D digitizing

- AFFORDABLE
- HIGH ACCURACY
- HIGH RESOLUTION
- EASY TO USE  
FlexScan3D software
- PORTABLE



M4 x 16 mm caphead



**MechInnovation Limited**, 7 Enright Close  
Leamington Spa - Warwickshire, CV32 6SQ  
Tel: +44 (0) 1926 886207  
[www.mechscan.co.uk](http://www.mechscan.co.uk) - [info@mechscan.co.uk](mailto:info@mechscan.co.uk)